

Suffolk Downs, Orient Heights and Beachmont Stations on the MBTA Blue Line Boston, Massachusetts

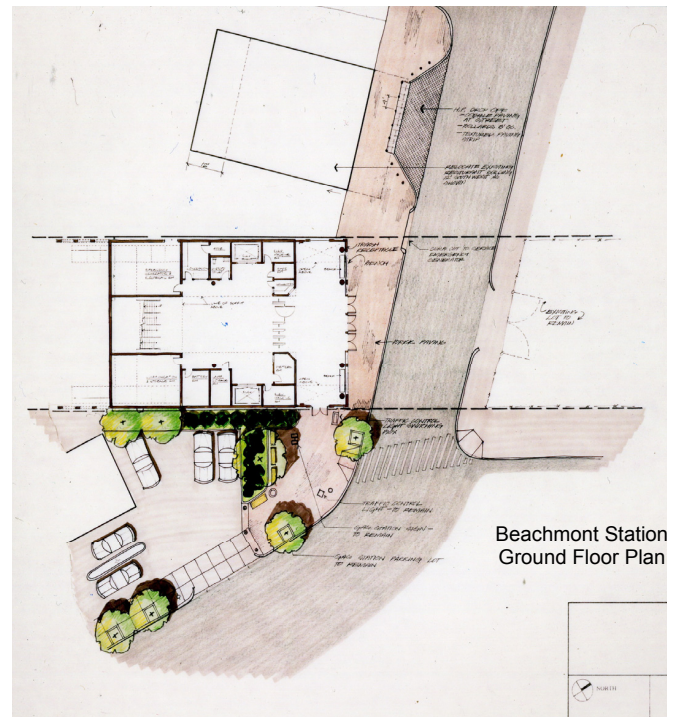
Responsible for three transit stations (Suffolk Downs, Orient Heights and Beachmont on the Blue Line.) Tasks encompassed management, coordination, and design.

Design Completion Date: 1991

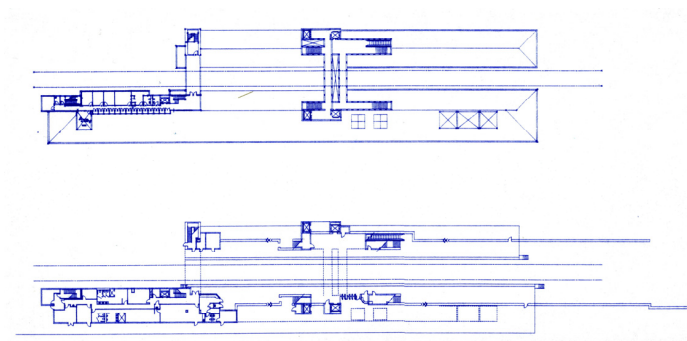
Role: Charles Bradley, III, AIA - Senior Designer/Project Manager (as an employee of Jack Patrick & Associates, Inc.)



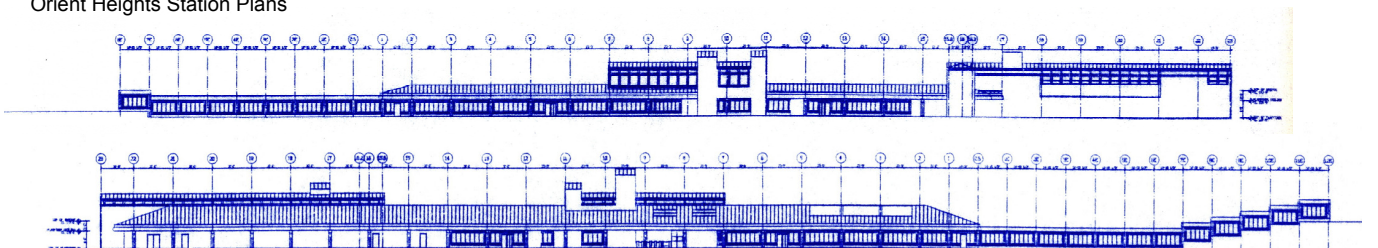
Beachmont Station Perspective



Beachmont Station
Ground Floor Plan



Orient Heights Station Plans



Orient Heights Station Elevations